

ALL-NEW FIESTA



Go Further

Visionary. Ingenious. Remarkable.
Every car bears his signature.

Henry Ford



Scan the QR codes to access additional content.

Contents

Introduction	2	Ford Remarkable Technologies	48
Vehicle personalisation.....	4	Fiesta body colours	50
Connected life.....	10	Exterior personalisation	52
Ford SYNC 3	12	Fiesta wheels	54
Panorama roof	14	Fiesta trims	56
B&O PLAY	16	Interior personalisation	58
Fiesta Vignale	18	Accessories.....	62
Fiesta ST-Line	22	Specifications	64
Premium interior	24	Dimensions & Capacity	80
Ford EcoBoost.....	26	Own	82
Active Park Assist	28	Next steps	84
Adaptive Cruise Control.....	30		
Lane-Keeping System	32		
Fiesta Models	34		
Style	36		
Zetec	38		
B&O PLAY Series.....	40		
Titanium/Titanium X	42		
Vignale.....	44		
ST-Line/ ST-Line X	46		

Fiesta ST-Line X 3-door
with Race Red standard body colour and 18" Rock
Metallic machined alloy wheels and panorama
roof (options at extra cost)

Fiesta Titanium 5-door
with Blue Wave exclusive body colour and 17"
alloy wheel style pack (options at extra cost)



How do you take yours?

Make your morning commute feel just as invigorating as that first cup of fresh ground coffee. With the All-New Ford Fiesta, we've prepared the purest blend of engaging driving dynamics, and a wider range of vibrant and unique options. Which means you can create the perfect Fiesta to partner your individual sense of style.



Play with colour.

For those who like to be more expressive, **Ford Fiesta personalisation options** let you choose from a selection of alloy wheels, roof, door mirror and body colour combinations - all intended to further enhance the beautiful exterior and help make your All-New Fiesta as unique as you.



Add extra style.

Distinctive styling doesn't stop with the exterior. Your individuality can also be reflected through an assortment of interior design flourishes that match selected exterior colours. Contrast stitching on seat trims, steering wheel and floor mats; as well as coloured accents across the instrument panel, centre console and interior door handles; plus rear-view mirror housing – all complement unique exterior body colours on selected models.







360°

The connected life.

Start your daily adventure with the All-New Ford Fiesta. Its forward-thinking engineering, stunning new exterior and beautifully crafted interior will give you real presence about town. Insightful technologies such as **Ford SYNC 3** (standard on Zetec and above) deliver smart and stylish ways of staying effortlessly connected. And an inspiring new audio arrangement by **B&O PLAY*** can breathe real energy into your music. Head turning, innovative and unique – the All-New Fiesta redefines the meaning of stylish and contemporary urban living.



Live Traffic* is available through the FordPass app. Connecting seamlessly via SYNC 3 with navigation, Live Traffic can give you up-to-the-minute traffic data through a connected mobile phone, enabling you to plan your journey more efficiently.

*B&O PLAY is standard on the B&O PLAY Series, Titanium X and Vignale. Optional on Zetec, Titanium, ST-Line and ST-Line X.

*Live Traffic access is free for the first 2 years following the registration of a new Ford featuring SYNC 3 with Navigation; thereafter there is an annual licence fee. Mobile data charges may apply.



Meet your phone's new best friend.

Ford SYNC 3

Car journeys need not be a disruption to your connectivity. Ford SYNC 3 integrates seamlessly with your compatible smartphone*, letting you control everything from phone calls and text messaging to music and satellite navigation (option at extra cost)—all via the touchscreen or through remarkably simple voice commands. (SYNC 3 is standard on Zetec and above. Option on Style)



Communication

Manage your phone, music, apps, and navigation all with simple voice commands. SYNC 3 can even read your text messages aloud for you. While Emergency Assistance¹ helps occupants place an emergency call to provide emergency services with the vehicle location in their respective language.

Navigation

Receive clear turn-by-turn directions to any destination and search for additional points of interest to set as waypoints along your route. You can also view local traffic reports or customise settings between full, split-screen or 3D map views. (Standard on Titanium, B&O PLAY Series, Titanium X, ST-Line X and Vignale. Optional on Style, Zetec and ST-Line)

Touchscreen

The SYNC 3 touchscreen supports multi-touch 'swipe' and 'pinch-to-zoom' gestures, and lets you arrange application icons and background displays just as you would on your tablet or smartphone. You can also switch between daytime and night modes, and tailor presets for multiple users.



Applink, Apple CarPlay and Android Auto

Control SYNC-compatible apps with Applink, while Apple CarPlay and Android Auto let you navigate your smartphone through the SYNC 3 home screen, as if it were your handset.

***Please Note:** Full SYNC 3 smartphone integration only available with iPhone 5/Android 5.0 (Lollipop) or higher. Some SYNC 3 functions require a data connection, so mobile data charges will apply. To check whether Apple CarPlay and Android Auto are available in your market, please check official Apple CarPlay and Android Auto websites for the latest information.

¹Ford Emergency Assistance is an innovative SYNC feature that uses a Bluetooth®-paired and connected mobile phone to help vehicle occupants initiate a call to the local Communications Centre, following a vehicle crash event involving an airbag deployment or fuel pump shut off. The feature operates in more than 40 European countries and regions. SYNC and Emergency Assistance not supported by all European Languages. See www.ford.co.uk for the latest information.

"Call John"

"Listen to message"

"Find town centre"

"I need fuel"

"I need to park"

"I'm hungry"



| SYNC





Bring the outside in.

Openable panorama roof

Enjoy more beautiful views of surrounding scenery from the comfort of your Fiesta. An electrically operated panorama roof truly lets you bring the world outside into the vehicle cabin. Providing an abundance of fresh air when opened, the sliding glass also has a solar reflective coating to help keep the interior cool when closed. While an internal sunblind provides extra shade when you need it. (Standard on Vignale. Option on Titanium, B&O PLAY Titanium, Titanium X and ST-Line X)





Is it live, or is it B&O PLAY?

B&O PLAY

Whatever your taste in music, from classic tracks to modern anthems, it deserves to sound the way the artists intended. Ford's exciting new 675 watt, 10-speaker audio system from B&O PLAY delivers exactly that. Exclusively designed and fine-tuned for the All-New Fiesta by specialist B&O PLAY acoustic engineers, it elevates the experience of every journey. And the distinctive speaker designs perfectly complement the Fiesta's stylish interior.

- Model specific sound calibration
- 10-speaker premium sound system
- Dual voice sub woofer
- Surround sound
- 675 W power output
- Unique B&O PLAY design
- B&O PLAY is standard on the B&O PLAY series, Titanium X and Vignale. Optional on Zetec, Titanium, ST-Line and ST-Line X.



Rooted in the rich 90-year heritage of Bang & Olufsen, the audio products of B&O PLAY deliver a remarkable quality of sound precision, through iconic designs at the forefront of contemporary style.



- Tweeter
- Midrange
- Woofer
- Dual voice subwoofer





The ultimate expression of luxury.

Fiesta Vignale

Ford Vignale offers a range of additional services and benefits for an enhanced ownership journey. The full Ford Vignale experience is available from FordStores, where you can enjoy the tranquil environment in a Ford Vignale Lounge and a specially trained Vignale Relationship Manager who will provide a personalised service tailored to your requirements.

Ford Vignale vehicles simply shine with outstanding craftsmanship and attention to detail. Order your **Fiesta Vignale** from a range of body colour options, including Ford's optional Milano Grigio paint colour, unique to the Ford Vignale range. While other exclusive exterior features such as satin-aluminium styling on bumpers, unique Vignale grille, and optional Vignale design 18" polished alloy wheels – all distinguish Vignale from other Fiesta models.



To view more models from our exclusive Vignale range, pick up a Vignale range brochure from your local Ford Dealer, or view online at www.Ford.co.uk

Ford Fiesta Vignale in Frozen White body colour and exclusive Vignale design 18" polished alloy wheels (options at extra cost).



Would I look good in this?

Enter the **Fiesta Vignale** and become immersed within a world of contemporary luxury. An elegant Ford Vignale display screen welcomes you, while sumptuous quilted leather seats with unique hexagonal trim designs create a premium leather interior in the truest sense.





Styled by sport.

Fiesta ST-Line

ST-Line delivers all the practicality of the Ford Fiesta, with the additional eye-catching aesthetics of a performance-line vehicle. Large rear spoiler, bodystyling kit, meshed front grilles, Rock Metallic alloy wheels, sports suspension and ST-Line exterior branding – all contribute to the car's unique blend of usability and head-turning good looks.

And this distinctively stylish image echoes through the Fiesta ST-Line interior – with its unique sports seats, ST-Line leather-trimmed steering wheel, aluminium gearshift insert, stainless steel sports pedals and signature ST-Line door threshold plates, all emphasising the sports inspired character of its design.



360°



Added layers of comfort.

Premium interior

Welcome to the Ford Fiesta's beautifully crafted interior. Available with high-quality partial or refined full leather seats, perfectly complemented by the leather-trimmed steering wheel, handbrake handle and gearshift knob. Enhanced ambient lighting, plus a centre console with armrest and cup holders – completes your ensemble with finesse.



Heated steering wheel

For extra warmth on crisp winter mornings, the Fiesta's heated steering wheel is easily activated at the push of a button or via your SYNC 3 system, to provide an additional layer of comfort between you and the cold outside. (Standard on Titanium X and Vignale. Optional via the Comfort Pack on Zetec and above)

Ford Fiesta ST-Line X in Race Red body colour with ST-Line X Red Pack interior and B&O PLAY Premium Audio sound system (options at extra cost)

The story of more efficiency, lower emissions.

Ford EcoBoost. Sub 1-litre International Engine of the Year 2016.

The diamond-like coating on the piston rings reduces friction; the turbocharger, direct injection and variable valve timing boost efficiency. The result is remarkable performance from such an economical petrol engine. **Winner at the International Engine of the Year Awards** for five years running, the 1.0-litre Ford EcoBoost is available in 100 PS, 125 PS and 140 PS versions.

Engineered for economy.

With the help of **Ford EConetic Technology**, the Fiesta's latest engines are remarkably fuel-efficient. The 1.0 Ford EcoBoost 100 PS petrol engine can achieve an impressive 65.7 mpg, with only 97 g/km of CO₂ emissions. The 1.5 TDCI 85 PS diesel engine is even more frugal, it can achieve a combined fuel consumption of 88.3 mpg, and CO₂ emissions of just 82 g/km.

(See Fuel and Performance section for more information)



INTERNATIONAL
engine
of the year
awards 2012
Presented by engine technology international magazine

Sub 1-litre
Ford 1.0-litre EcoBoost

INTERNATIONAL
engine
of the year
awards 2013
Presented by engine technology international magazine

Sub 1-litre
Ford 1.0 litre EcoBoost

INTERNATIONAL
engine
of the year
awards 2014
Presented by engine technology international magazine

Sub 1-litre
Ford 1.0 litre EcoBoost

INTERNATIONAL
engine
of the year
awards 2015
Presented by engine technology international magazine

Sub 1-litre
Ford 1.0 litre EcoBoost

INTERNATIONAL
engine
of the year
awards 2016
Presented by engine technology international magazine

Sub 1-litre
Ford 1.0 litre EcoBoost

Winner at the International Engine of the Year Awards
for five years running.



Let Fiesta park itself.

Active Park Assist

Active Park Assist can park your Fiesta for you. The system locates suitable parking spaces and can automatically steer you in. It can manoeuvre you out of spaces too. All you need to do is operate the accelerator, brake and gears. (Option on Titanium, B&O PLAY Titanium, Titanium X and Vignale)

Helps you find a space.

Active Park Assist can steer you into parallel or perpendicular parking spaces just 20% longer or wider than the car. Simply push a button and the sensors of this innovative system locate a suitable space as you drive past. Then it automatically steers you in, while you operate the accelerator, brake and gears following on-screen instructions and audible signals. (Feature within Active Park Assist option)

And get in. And get out.

Park-Out Assist works like Active Park Assist in reverse, helping you manoeuvre out of a parallel space. The system steers while you keep control of the accelerator, brake and gears. When the system has cleared the space, it gives you a 'Take control of steering' message through the cluster. (Feature within Active Park Assist option)





Keep your distance automatically.

Adaptive Cruise Control with Distance Alert

Combines cruise control and distance control. Simply enter the desired speed and distance from the vehicle in front, and Adaptive Cruise Control is designed to automatically maintain the set distance if traffic conditions do not allow travel at the desired cruising speed.

Distance Alert offers an audible and visual warning when it detects a risk of colliding with the vehicle in front. At the same time, Pre-Collision Assistance is designed to prepare the brakes to facilitate maximum braking performance by optimising pressure within the brake system. (Option on all series within the Driver Assistance Pack)



An extra pair of eyes.

Lane-Keeping System

Ford Lane-Keeping System has two key features and operates at speeds over 40 mph on highways and interurban roads with visible markings. The system can be overridden by the driver at any time. (Standard)

- **Lane-Keeping Alert** helps to keep the vehicle within its driven lane. Steering wheel feedback alerts you if an unintended lane departure is detected.
- **Lane-Keeping Aid** applies a steering torque back towards that lane, in the event of an unintended lane departure.



*Choose the right
Fiesta for you.*

Available in a range of distinctively individual series design options, whatever your preference there is an All-New Ford Fiesta to suit you.



Style

Zetec

Core

An elegant design, impressive integrated technologies, and a superb range of engine choices, all contribute to the All-New Ford Fiesta’s outstanding appeal.



B&O PLAY Zetec
(available in Bohai Bay Mint and Chrome Copper)

B&O PLAY Titanium
(available in Bohai Bay Mint and Chrome Copper)

B&O PLAY Series

The stylish B&O PLAY Series matches premium audio with a choice of two striking exterior and interior colour themes, both exclusive to the B&O PLAY Series.



Titanium

Titanium X

Vignale

Luxury

Fiesta’s luxury models deliver superior levels of sophistication and comfort, with premium materials and additional technologies.



ST-Line

ST-Line X

Sport

Distinctive ST-Line exterior styling delivers the dynamic Ford Fiesta driving experience with additional eye-catching individuality.

FORD FIESTA Core Models

Style

Standard exterior features

- 15" steel wheels with full wheel covers
- Body coloured bumpers with mesh grille
- Halogen projector headlights with daytime running lights
- Body coloured electrically-operated and heated door mirrors with side indicators
- Body colour spoiler, door and liftgate handles
- Ford Easy-Fuel capless refuelling system

Standard interior features

- Remote central locking
- Rake-and reach-adjustable steering column
- Manual air conditioning
- Lane-Keeping System (including Lane-Keeping Alert and Lane-Keeping Aid)
- Adjustable Speed Limiter
- Rear seatbelt minder
- Rear centre headrest
- Auto-headlamps
- Front and rear overhead courtesy lights
- Electrically-operated front windows
- Driver's seat with 4-way manual adjustment
- MyKey®
- Tyre Pressure Monitoring System
- Tyre Repair Kit
- Ford Eco Mode driver information system
- Trip computer
- AM/FM Radio with 4.2" display, Bluetooth® with My Ford Device Dock, USB connectivity and six speakers

Bodystyles

3-door, 5-door

Engines

Petrol

1.1 Ti-VCT (70 PS)

Diesel

1.5 TDCi (85 PS)



- Lane-Keeping System (including Lane-Keeping Alert and Lane-Keeping Aid) (Standard)



- Body colour rear spoiler (Standard)



FORD FIESTA Core Models

Zetec

Exterior features additional to Style

- 15" 8-spoke alloy wheels in Sparkle Silver finish
- Front fog lamps with cornering lights
- Upper grille with chrome surround and horizontal bars
- Chrome belt line finisher
- LED daytime running lights
- Quickclear heated windscreen

Interior features additional to Style

- Leather-trimmed steering wheel, handbrake handle and gearshift knob
- Thatcham Category 1 perimeter and volume sensing alarm
- Ford SYNC 3 DAB Radio with 6.5" Touchscreen, Emergency Assistance, Apple CarPlay & Android Auto, USB connectivity and 6 speakers

Bodystyles

3-door, 5-door

Engines

Petrol

1.0 Ford EcoBoost (100 PS), 1.1 Ti-VCT (85 PS)

Diesel

1.5 TDCi (85 PS)



■ Ford SYNC 3 DAB Radio with 6.5" Touchscreen (Standard)



■ 15" 8-spoke alloy wheels in Sparkle Silver finish (Standard)



FORD FIESTA B&O PLAY Series

B&O PLAY Zetec

Standard features additional to Zetec

- In a choice of Bohai Bay Mint & Chrome Copper body colours exclusive to the B&O PLAY Series
- B&O PLAY Premium audio system with 360° sound. Includes 10 speakers with subwoofer
- Digital Sound Processor (DSP)
- Ford SYNC 3 Navigation with 8" Touchscreen
- Bohai Bay Mint or Chrome Copper colour theme to key interior areas:
- Anodized interior door spears, airvent "Smiley" and instrument panel spear
- Contrast stitching on floor mats
- Interior mirror cap cover

B&O PLAY Titanium

Standard features additional to Titanium

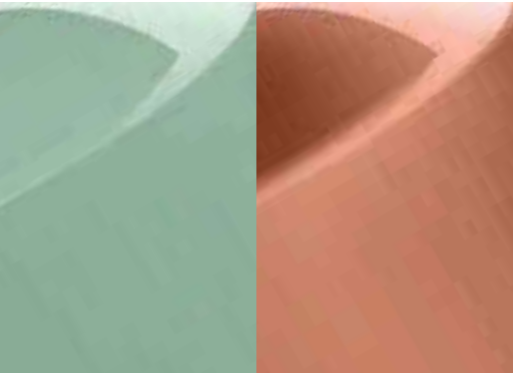
- In a choice of Bohai Bay Mint & Chrome Copper body colours, exclusive to the B&O PLAY Series
- B&O PLAY Premium audio system with 360° sound. Includes 10 speakers with subwoofer
- Digital Sound Processor (DSP)
- Bohai Bay Mint or Chrome Copper colour theme to key interior areas:
- Anodized interior door spears, airvent "Smiley" and instrument panel spear
- Contrast stitching on floor mats
- Interior mirror cap cover

Bodystyles
3-door, 5-door

For Engine availability see Zetec and Titanium series



■ B&O PLAY Premium audio system (Standard)



■ B&O PLAY Series exclusive body colours (Standard)

Interior model shown is B&O PLAY Titanium Edition in Chrome Copper body colour



FORD FIESTA Luxury collection

Titanium

Exterior features additional to Zetec

- 16" 10-spoke alloy wheels
- LED Night Signature to rear lights
- Power-foldable door mirrors with puddle lights
- Rear privacy glass
- Auto High Beam
- Rain-sensing wipers

Interior features additional to Zetec

- Cruise control with adjustable speed limiter
- Keyless Start with Ford Power Starter Button
- Centre console with armrest, openable stowage and 12 V power point
- Electronic Automatic Temperature Control (EATC)
- Traffic Sign Recognition and Driver Alert
- Front and rear floor mats with Metal Grey stitching
- Ambient lighting
- Auto-dimming rear-view mirror
- Ford SYNC 3 Navigation with 8" Touchscreen, DAB Radio, Emergency Assistance, Apple CarPlay & Android Auto, USB connectivity and 6 speakers

Titanium X

Standard features additional to Titanium

- B&O PLAY Premium audio system with 360° sound. Includes 10 speakers with subwoofer
- Digital Sound Processor (DSP)
- Heated partial leather front seats, heated steering wheel and heated windscreen washers jets
- Ford KeyFree System with Ford Power Starter Button
- Electrically-operated rear windows (5-door only)
- Rear-view camera

Bodystyles

3-door, 5-door

Engines

Petrol

1.0 Ford EcoBoost (100/125 PS)

Diesel

1.5 TDCi (120 PS)



- SYNC 3 Navigation (Standard on Titanium and Titanium X)



- Heated front seats with partial leather seat trims (Standard on Titanium X)



FORD FIESTA Luxury collection

Vignale

Exterior features additional to Titanium X

- 17" 10-spoke alloy wheels in Luster-Nickel finish
- Vignale front fog lamps
- Vignale rear & wing badges
- Unique Vignale upper grille with chrome surround
- Unique Vignale front and rear bumpers with satin-aluminium applique

Standard interior features additional to Titanium X

- Openable panorama roof
- Vignale Black Ruby leather heated seats & steering wheel
- Vignale front door threshold plates
- Vignale front and rear velour floor mats
- Rear-view camera with rear parking distance sensors

Bodystyles

3-door, 5-door

Engines

Petrol

1.0 Ford EcoBoost (100/125/140 PS)

Diesel

1.5 TDCi (120 PS)



■ Unique Vignale upper grille with chrome surround (Standard)



■ Vignale Black Ruby leather seat trim (Standard)



FORD FIESTA Sport models

ST-Line

Exterior features additional to Zetec

- 17" 5x2-spoke alloy wheels in Rock Metallic finish
- Sports tuned suspension
- ST-Line front fog lamps
- Unique ST-Line upper grille, bumpers and side skirts
- ST-Line wing badges
- Large body coloured rear spoiler
- Single chrome exhaust

Interior features additional to Zetec

- Sports style front seats
- Stainless steel sports pedals
- Leather-trimmed sports style flat bottomed steering wheel
- Leather-trimmed gearshift knob with aluminium insert
- ST-Line front door threshold plates
- Keyless Start with Ford Power Starter Button
- Dark woven headliner

ST-Line X

Features additional to ST-Line

- LED Night Signature to rear lights
- Auto High Beam
- Rain sensing wipers
- Traffic Sign Recognition and Driver Alert
- Power-foldable door mirrors with puddle lights
- Rear privacy glass
- Partial leather sports style front seats
- Electronic Automatic Temperature Control (EATC)
- Cruise Control
- Ford SYNC 3 Navigation with 8" Touchscreen
- Centre console with armrest, openable stowage and 12 V power point
- Auto-dimming rear-view mirror

Bodystyles

3-door, 5-door

Engines

Petrol

1.0 Ford EcoBoost (100/125/140 PS)

Diesel

1.5 TDCi (120 PS)



■ ST-Line X Red Pack partial leather interior (Option on ST-Line X)



■ LED Night Signature to rear lights (Standard on ST-Line X)





Auto High Beam

Auto High Beam can detect oncoming vehicles and will automatically dip your beams for you. Only available with Traffic Sign Recognition and Driver Alert System. (Standard on Titanium, B&O PLAY Titanium, Titanium X, ST-Line X and Vignale)



Adaptive Cruise Control

Combines cruise control and distance control. Simply enter the desired speed and distance from the vehicle in front, and Adaptive Cruise Control is designed to automatically maintain the set distance if traffic conditions do not allow travel at the desired cruising speed. (Option on all series within the Driver Assistance Pack)



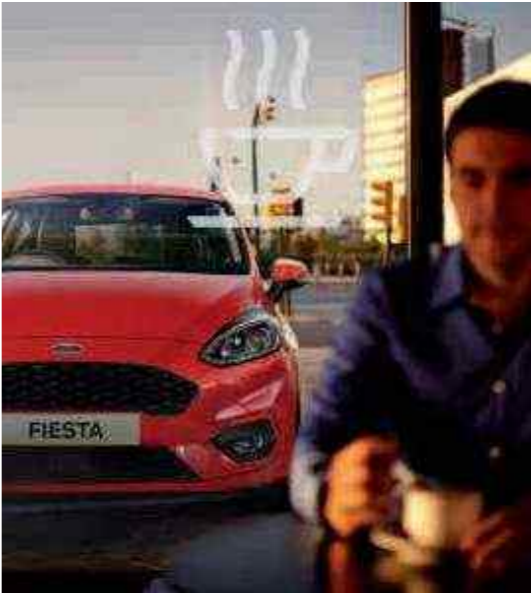
Blind Spot Information System

Blind Spot Information System is designed to alert you via discreet warning lights built into the driver and passenger's door mirrors, when it detects another vehicle - car, van or lorry - entering your blind spot while driving. Similarly, as you reverse from a perpendicular parking space, Cross Traffic Alert scans left and right. If a moving vehicle or other hazard is detected, visual and audible alert warnings are given. (Option on Zetec and above)



Retractable door edge protectors

Activated when your car doors are opened, the system is designed to help prevent undue damage by providing a protective barrier between your Fiesta's door edges and neighbouring parked vehicles or other obstacles. (Option on Zetec and above)



Traffic Sign Recognition

Traffic Sign Recognition is designed to read standard format road-speed signs and display the posted speed limit in the instrument cluster. (Standard on Titanium, B&O PLAY Titanium, Titanium X, ST-Line X and Vignale)



Driver Alert

Designed to inform you if the system detects driving behaviour that indicates a drop in alertness levels. Initially, a warning icon is displayed in the instrument cluster, asking you to take a rest. If driving alertness further declines, the message is repeated and combined with a chime. (Standard on Titanium, B&O PLAY Titanium, Titanium X, ST-Line X and Vignale. Option on Style, Zetec, B&O PLAY Zetec and ST-Line within the Driver Assistance Pack)



Frozen White
Premium body colour*



Shadow Black
Premium body colour*



Deep Impact Blue
Premium body colour*



Ruby Red
Exclusive body colour*



Race Red
Standard body colour



Magnetic
Premium body colour*



Moondust Silver
Premium body colour*



Blue Wave
Exclusive body colour*



Blazer Blue
Standard body colour



Bohai Bay Mint
Exclusive to B&O PLAY series body colour^o



Chrome Copper
Exclusive to B&O PLAY series body colour^o



Milano Grigio[†]
Exclusive to Vignale body colour*

We chose *Blue Wave*. What colour will you choose?

The Ford Fiesta owes its beautiful and durable exterior to a special multi-stage painting process. From the wax-injected steel body sections to the protective top coat, new materials and application processes ensure your All-New Fiesta will retain its good looks for many years to come.

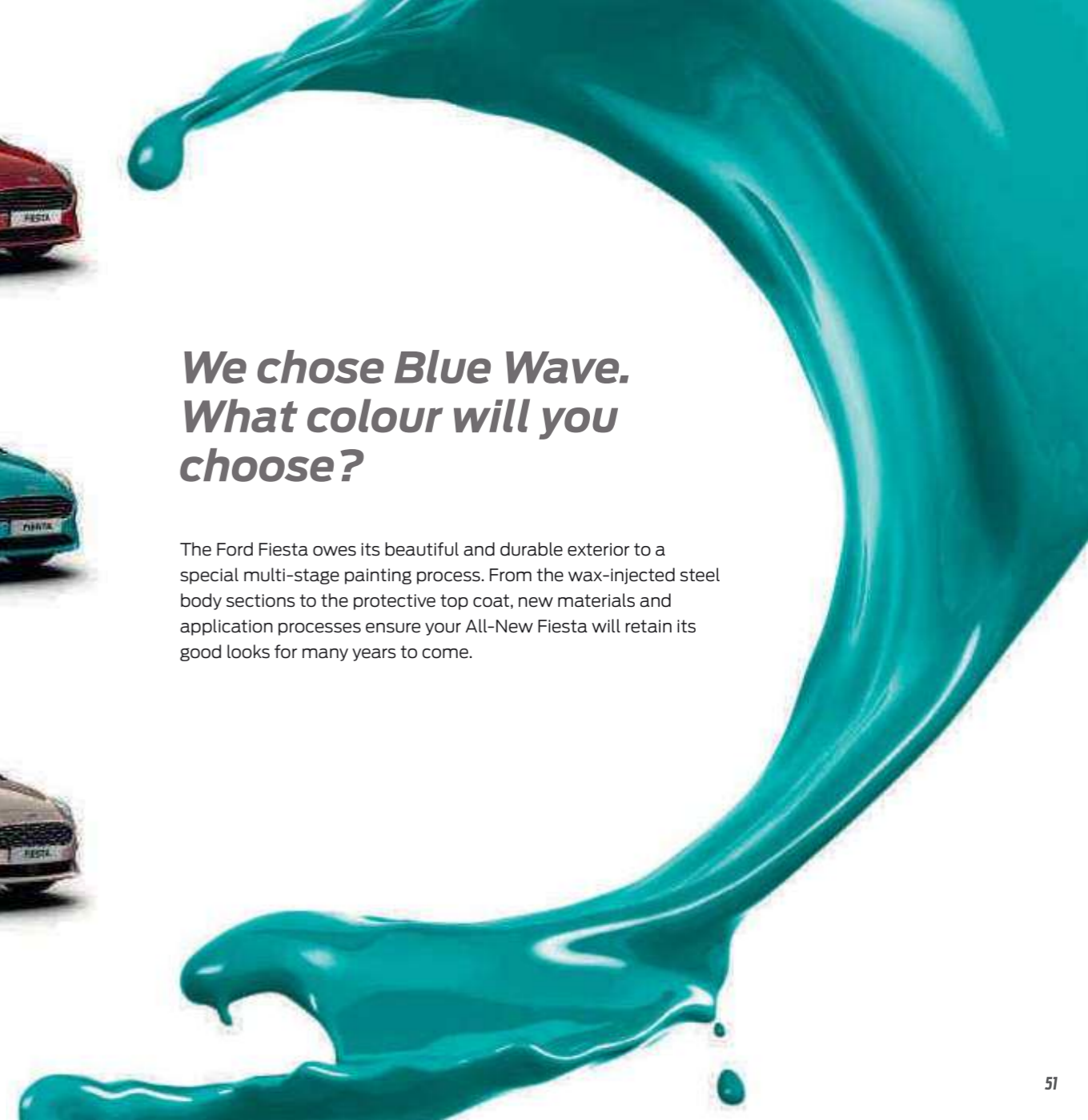
*At extra cost.

†Exclusive body colour unique to Vignale.

^oStandard body colour exclusive to B&O PLAY Series.

The Ford Fiesta is covered by the Ford Perforation Warranty for 12 years from the date of first registration. Subject to terms and conditions.

Note The car images used are to illustrate body colours only and may not reflect current specification or product availability in certain markets. Colours and trims reproduced within this brochure may vary from the actual colours, due to the limitations of the printing processes used.



What's your favourite combination?

Exterior personalisation

Create your perfect Fiesta. Choose your favourite colour combination from a range of contrasting body colour, roof and door mirror options available. (Optional on Titanium, Titanium X, ST-Line and ST-Line X)



Magnetic
Premium body colour/
Shadow Black
Metallic roof and mirrors



Frozen White
Premium body colour/
Race Red
Solid roof and mirrors



Race Red
Standard body colour/
Frozen White
Solid roof and mirrors



Shadow Black
Premium body colour/
Race Red
Solid roof and mirrors



Shadow Black
Premium body colour/
Frozen White
Solid roof and mirrors



Moondust Silver
Premium body colour/
Shadow Black
Metallic roof and mirrors



Frozen White
Premium body colour/
Shadow Black
Metallic roof and mirrors



Race Red
Standard body colour/
Shadow Black
Metallic roof and mirrors

The Ford Fiesta is covered by the Ford Perforation Warranty for 12 years from the date of first registration. Subject to terms and conditions.

Note The car images used are to illustrate body and contrast roof & mirror colours only. Colours and trims reproduced within this brochure may vary from the actual colours, due to the limitations of the printing processes used.



FORD FIESTA Wheels and tyres



15"
8-spoke, Sparkle Silver alloy wheel
(Standard on Zetec and B&O PLAY Zetec)



16"
10-spoke, Sparkle Silver alloy wheel
(Standard on Titanium, B&O PLAY Titanium and Titanium X)



16"
8-spoke, Rock Metallic alloy wheel
(Option on Zetec, B&O PLAY Zetec, Titanium, B&O PLAY Titanium and Titanium X within the 16" Style Pack)



17"
8-spoke, Sparkle Silver alloy wheel
(Option on Titanium, B&O PLAY Titanium and Titanium X within the 17" Style Pack)



17"
5x2-spoke ST-Line unique Rock Metallic alloy wheel
(Standard on ST-Line and ST-Line X)



17"
10-spoke, Vignale unique Luster Nickel alloy wheel
(Standard on Vignale)



18"
5x2-spoke ST-Line unique Rock Metallic/Machined alloy wheel
(Option on ST-Line and ST-Line X)



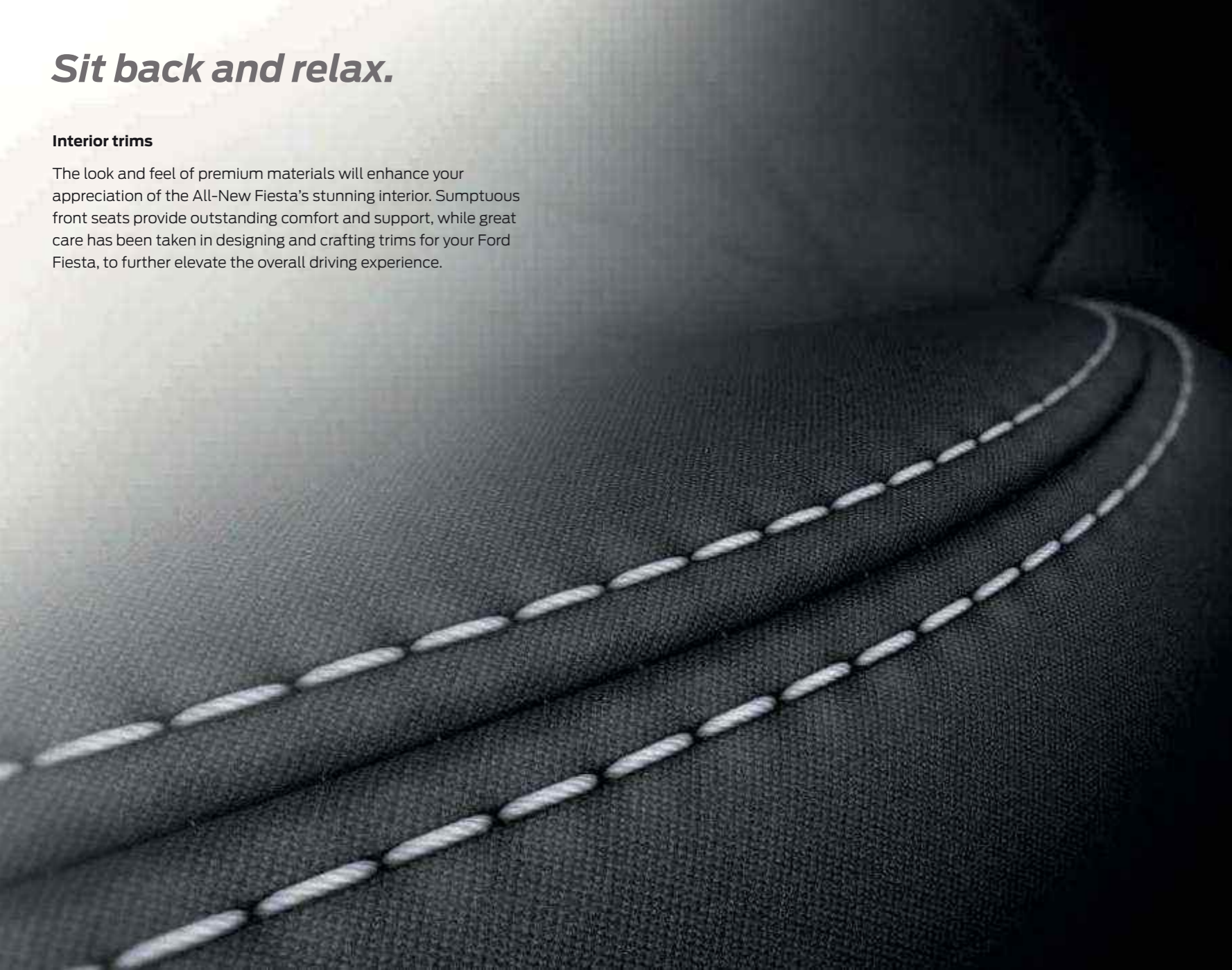
18"
8-spoke Vignale unique Polished alloy wheel
(Option on Vignale)



Sit back and relax.

Interior trims

The look and feel of premium materials will enhance your appreciation of the All-New Fiesta's stunning interior. Sumptuous front seats provide outstanding comfort and support, while great care has been taken in designing and crafting trims for your Ford Fiesta, to further elevate the overall driving experience.



Intersection/Tira
In Ebony for Style



Elow/Domo
In Ebony for Zetec, Titanium and the B&O PLAY Series



Hexagon Quilted Leather
In Black Ruby for Vignale



Court
In Ebony for ST-Line



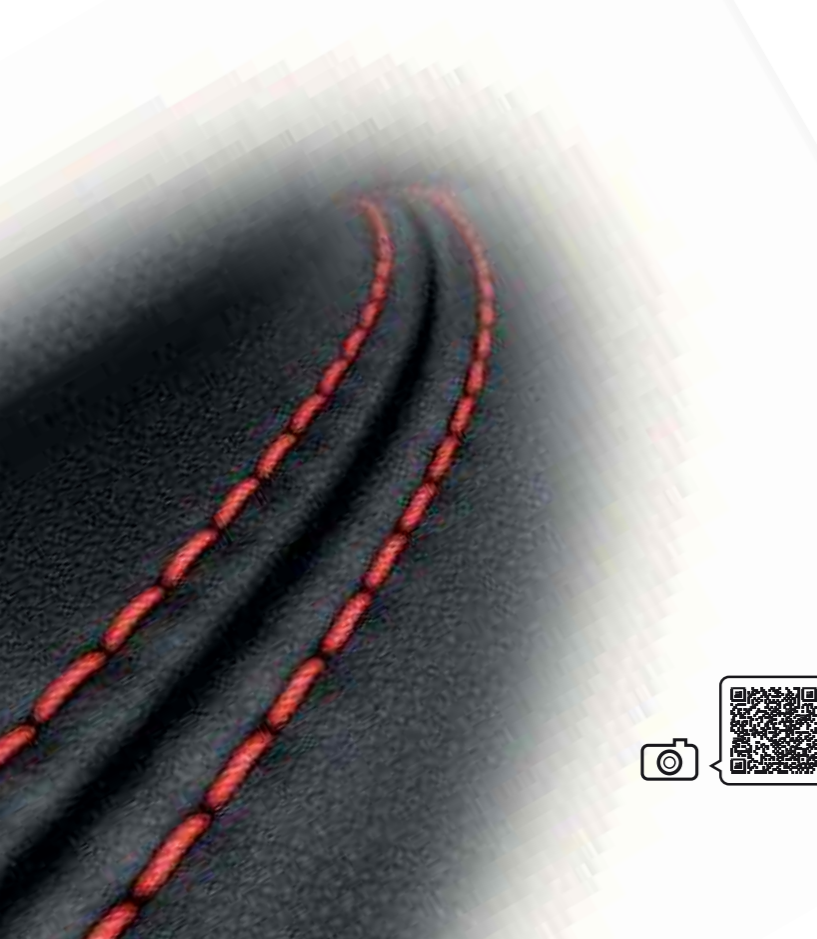
Salerno Leather/Flagstone
In Ebony for Titanium X



The fine detail.

Interior personalisation

The All-New Fiesta can deliver an assortment of interior design flourishes – such as coloured accents across the instrument panel, airvent "Smiley" and interior door handles, rear-view mirror housing, and stand-out contrast stitching on floor mats, steering wheel and seat trims, depending on the series.



B&O PLAY Series Chrome Copper interior
Standard on B&O PLAY Zetec and Titanium Chrome Copper Editions



B&O PLAY Series Bohai Bay Mint interior
Standard on B&O PLAY Zetec and Titanium Bohai Bay Mint Editions



ST-Line X Metal Grey partial leather interior
Standard on ST-Line X



ST-Line X Red Pack partial leather interior
Option on ST-Line X

FORD FIESTA Colour and trim

	Standard body colours		Premium body colours*					Exclusive body colours*				
	Blazer Blue	Race Red	Frozen White	Deep Impact Blue**	Moondust Silver	Magnetic	Shadow Black	Bohal Bay Mint	Chrome Copper	Blue Wave	Ruby Red	Milano Grigio
Style												
Seat facing trim and colour: Intersection/Tira in Ebony												
Seat bolster trim and colour: View in Ebony												
Instrument panel colour: Ebony												
Zetec												
Seat facing trim and colour: Elow in Ebony												
Seat bolster trim and colour: Domo in Ebony												
Instrument panel colour: Ebony												
B&O PLAY Series												
Seat facing trim and colour: Elow in Ebony												
Seat bolster trim and colour: Domo in Ebony												
Instrument panel colour: Ebony												
ST-Line												
Seat facing trim and colour: Court in Ebony												
Seat bolster trim and colour: Nexus in Ebony												
Instrument panel colour: Ebony												
ST-Line X												
Seat facing trim and colour: Court in Ebony												
Seat bolster trim and colour: Skip in Ebony with Metal Grey Stitching and grey vinyl inserts												
Instrument panel colour: Ebony												
ST-Line X Red Pack Interior (Option)												
Seat facing trim and colour: Court in Ebony												
Seat bolster trim and colour: Skip in Ebony with Red Stitching and red vinyl inserts												
Instrument panel colour: Ebony												
Titanium												
Seat facing trim and colour: Elow in Ebony												
Seat bolster trim and colour: Domo in Ebony												
Instrument panel colour: Ebony												
Titanium X												
Seat facing trim and colour: Flagstone in Ebony												
Seat bolster trim and colour: Windsor Leather in Ebony with Metal Grey Stitching												
Instrument panel colour: Ebony												
Vignale												
Seat facing trim and colour: Hexagon Quilted Leather in Black Ruby												
Seat bolster trim and colour: Windsor Leather in Black Ruby												
Instrument panel colour: Ebony												

Available 

*Premium and Exclusive paints are optional at extra cost.





Britax Römer®+ child seat

The safest way for a child to travel is on the rear seat, in a specially-designed child safety seat. Various models, also with ISOFIX for additional safety, are available for all weights (for babies and toddlers up to 35 kg). Some are also available in combination with inflatable seat belts. (Accessory)



Tow bars

If you're planning to tow a trailer you want to be sure it's going to stay safely attached and work in combination with the vehicle's Electronic Stability Control (ESC) ensuring that trailer sway is counteracted. Tow bars are available in two designs: fixed (accessory) and detachable. Restrictions apply. (Option and accessory)



Boot liner

When transporting wet and dirty items it is best to protect your load compartment. Fiesta's hard-wearing boot liners are made from heavy-duty, non-slip materials. They protect the carpet in your boot from mud, dirt and spillages and help keep your car looking as great as the day you bought it. (Accessory)

Uebler® rear bike carrier

High-quality tow bar-mounted bike carrier. Features practical tilting mechanism for easy access to the load compartment. (Accessory)

Load retention guard

Robust retention system for fitment behind the second row seats keeps dogs or items of luggage safely in the load compartment (removable when not in use). Meets European ECE-R17.07 ECE- R17/ISO 27955 safety requirements. (Option and accessory)

Roof base carrier

A lockable carrier is the base for all roof attachments. (Accessory)

Thule®+ roof box

Designed to carry a wide variety of loads and protect them from weather and theft. Available in various sizes, all models come with dual-opening for easy access. (Accessory)

Thule®+ roof bike carrier

High-quality, easy-to-install roof bike carrier from leading manufacturer Thule®. (Accessory)

Thule®+ roof ski/snowboard carrier

Elegant, fully-lockable ski carrier suitable for up to six pairs of skis or four snowboards. (Accessory)

Mud flaps

Contoured mud flaps help to protect the bodywork of your Ford Fiesta from road spray and stone chips. Available as sets for front and rear. Cannot be used in combination with body styling kit. (Accessory)

Rubber floor mats

All-weather rubberised floor mats are tailor-made to fit perfectly and protect against dirt and damp. Securely fixed directly onto the vehicle's floor, the mat is designed to not slip and interfere with the pedals. (Accessory)



For more accessories please visit the Online Accessory Catalogue at www.ford-accessories.com
For a range of Ford branded items – from clothing to lifestyle products and model cars – visit www.fordlifestylecollection.com

♦Item covered by third party supplier's warranty, please see www.ford-accessories.com for details.



Most powerful

1.0 Ford EcoBoost (140 PS)
CO₂ emissions 102 g/km

Lowest emissions

1.5 TDCi (85 PS)
CO₂ emissions 82 g/km

FORD **FIESTA** Fuel and Performance

The fuel economy figures quoted in the table below are achieved by following strict EU governed test procedures and are specifically designed to enable customers to compare vehicles from all manufacturers on a like-for-like basis. Fuel consumption is directly affected by the length of the journey; number of passengers and amount of luggage carried; individual driving style; road and traffic conditions; weather conditions; vehicle age, mileage, condition and standard of maintenance; use of vehicle features such as air conditioning; and any modifications to the vehicle such as the addition of a roof rack. Your fuel economy will vary based on these and other factors and, for these reasons, many drivers may not achieve the EU fuel economy figures (below) in day-to-day driving, although the vehicle is technically capable of doing so.

	1.1 Ti-VCT (70 PS)	1.1 Ti-VCT (85 PS)	1.0 Ford EcoBoost (100 PS)	1.0 Ford EcoBoost (100 PS) Automatic	1.0 Ford EcoBoost (125 PS)	1.0 Ford EcoBoost (140 PS)	1.5 Duratorq TDCi (85 PS) 3-door	1.5 Duratorq TDCi (85 PS) 5-door	1.5 Duratorq TDCi (120 PS)
Euro Stage	Stage VI	Stage VI	Stage VI	Stage VI	Stage VI	Stage VI	Stage VI	Stage VI	Stage VI
Maximum Power PS (kW)	70 (52)	85(63)	100 (73.5)	100 (73.5)	125 (92)	140 (103)	85 (63)	85 (63)	120 (88)
Torque Nm	110	110	170	170	170	180	215	215	270
CO ₂ emissions (g/km) ⁸⁰	101	101	97	118	98	102	82	84	89
Transmission	5 speed manual	5 speed manual	6 speed manual	6 speed automatic	6 speed manual	6 speed manual	6 speed manual	6 speed manual	6 speed manual
Drive	4x2	4x2	4x2	4x2	4x2	4x2	4x2	4x2	4x2
Fuel consumption in mpg (L/100 km) ⁸⁰									
Urban	50.4 (5.6)	50.4 (5.6)	52.3 (5.4)	40.9 (6.9)	52.3 (5.4)	48.7 (5.8)	80.7 (3.5)	76.3 (3.7)	72.4 (3.9)
Extra Urban	76.3 (3.7)	76.3 (3.7)	78.5 (3.6)	67.3 (4.2)	78.5 (3.6)	74.3 (3.8)	94.2 (3.0)	91.1 (3.1)	88.3 (3.2)
Combined	64.2 (4.4)	64.2 (4.4)	65.7 (4.3)	54.3 (5.2)	65.7 (4.3)	62.8 (4.5)	88.3 (3.2)	85.6 (3.3)	80.7 (3.5)

*In 4th gear. ⁸⁰Ford test figures. ⁸⁰The declared Fuel/Energy Consumptions, CO₂ emissions and electric range are measured according to the technical requirements and specifications of the European Regulations (EC) 715/2007 and (EC) 692/2008 as last amended. Fuel consumption and CO₂ emissions are specified for a vehicle variant and not for a single car. The applied standard test procedure enables comparison between different vehicle types and different manufacturers. In addition to the fuel efficiency of a car, driving behaviour as well as other non-technical factors play a role in determining a car's fuel/energy consumption, CO₂ emissions and electric range. CO₂ is the main greenhouse gas responsible for global warming. A guide on fuel economy and CO₂ emissions which contain data for all new passenger car models is available at any point of sale free of charge or can be downloaded under <http://carfueldata.dft.gov.uk>
#Represents the lightest kerbweight assuming driver at 75kg, full fluid levels and 90% fuel levels, subject to manufacturing tolerances and options, etc., fitted. Towing limits quoted represent the maximum towing ability of the vehicle at its Gross Vehicle Mass to restart on a 12 per cent gradient at sea level. The performance and economy of all models will be reduced when used for towing. Gross Train Mass includes trailer weight.

FORD FIESTA Fuel and Performance

	1.1Ti-VCT (70 PS)	1.1Ti-VCT (85 PS)	1.0 Ford EcoBoost (100 PS)	1.0 Ford EcoBoost (100 PS) Automatic	1.0 Ford EcoBoost (125 PS)	1.0 Ford EcoBoost (140 PS)	1.5 Duratorq TDCi (85 PS) 3-door	1.5 Duratorq TDCi (85 PS) 5-door	1.5 Duratorq TDCi (120 PS)
Performance ^o									
Max. speed (mph)	99	105	113	111	121	125	108	108	121
0-62 mph (secs)	14.9	14	10.5	12.2	9.9	9.0	12.5	12.5	9
31-62 mph* (secs)	17.9	17.5	11	N/A	9.9	8.5	12.8	12.8	8.9
Weights & Loads (3-door/5-door)									
Kerbweight (kg)*	1113/1135	1113/1135	1144/1163	1184/1206	1144/1164	1144/1164	1163	1186	1188/1207
Gross Vehicle Mass (kg)	1620/1635	1620/1635	1645/1665	1650/1675	1645/1665	1645/1665	1655	1675	1665/1685
ST-Line - Gross Vehicle Mass (kg)	N/A	N/A	1630/1650	1635/1655	1630/1650	1630/1650	N/A	N/A	1650/1670
Gross Train Mass (kg)	2370/2390	2370/2390	2645/2665	2650/2675	2645/2665	2645/2665	2405	2425	2665/2685
Max. Towable Mass# (kg)(12%) (braked)	750	750	1000	1000	1000	1000	750	750	1000
Max. Towable Mass (kg) (unbraked)	555/565	555/565	570/580	590/600	570/580	570/580	580/595	580/595	590/600
Roof Load(kg)	50	50	50	50	50	50	50	50	50

*In 4th gear. ^oFord test figures. ^{oo}The declared Fuel/Energy Consumptions, CO₂ emissions and electric range are measured according to the technical requirements and specifications of the European Regulations (EC) 715/2007 and (EC) 692/2008 as last amended. Fuel consumption and CO₂ emissions are specified for a vehicle variant and not for a single car. The applied standard test procedure enables comparison between different vehicle types and different manufacturers. In addition to the fuel efficiency of a car, driving behaviour as well as other non-technical factors play a role in determining a car's fuel/energy consumption, CO₂ emissions and electric range. CO₂ is the main greenhouse gas responsible for global warming. A guide on fuel economy and CO₂ emissions which contain data for all new passenger car models is available at any point of sale free of charge or can be downloaded under <http://carfueldata.dft.gov.uk>
#Represents the lightest kerbweight assuming driver at 75kg, full fluid levels and 90% fuel levels, subject to manufacturing tolerances and options, etc., fitted. Towing limits quoted represent the maximum towing ability of the vehicle at its Gross Vehicle Mass to restart on a 12 per cent gradient at sea level. The performance and economy of all models will be reduced when used for towing. Gross Train Mass includes trailer weight.



FORD FIESTA Exterior features

	Style	Zetec	B&O PLAY Zetec	ST-Line	ST-Line X	Titanium	B&O PLAY Titanium	Titanium X	Vignale
Exterior design features									
Door mirrors – Electrically-operated and heated, integrated side indicator, body colour housings	■	■	■	■					
Door mirrors – Electrically-operated and heated, power-foldable, integrated side indicator, body colour housings with puddle lights		▣	▣	▣	■	■	■	■	■
Door mirrors – Blind Spot Information System with Cross Traffic Alert (includes power-foldable door mirrors with puddle lights)		□	□	□	□	□	□	□	□
Front upper grille – Self-colour, mesh design	■								
Front upper grille – Chrome surround and horizontal bars		■	■			■	■	■	
Front upper grille – Unique ST-Line				■	■				
Front upper grille – Unique Vignale mesh with chrome surround									■
Front bumper – Body coloured	■	■	■			■	■	■	
Front bumper – Unique ST-Line				■	■				
Front bumper – Unique Vignale									■
Front fog lights (including cornering lights) – Bright bezel		■	■			■	■	■	
Front fog lights (including cornering lights) – ST-Line black bezel				■	■				
Front fog lights (including cornering lights) – Unique Vignale satin aluminium bezel									■
Rear bumper – Body coloured upper, self-colour lower	■	■	■			■	■	■	
Rear bumper – Unique ST-Line				■	■				
Rear bumper – Unique Vignale with diffusor and satin aluminium applique									■
Rear fog lights	■	■	■	■	■	■	■	■	■
ST-Line side skirt body mouldings – body colour				■	■				
Side panel applique – Unique Vignale arrow, satin aluminium									■
Rear spoiler – Body colour with centre high mounted stop light	■	■	■			■	■	■	■
Large rear spoiler – Body colour with centre high mounted stop light				■	■				
Black belt line finisher	■			■	■				
Chrome belt line finisher		■	■			■	■	■	■
Openable Panorama roof					□	□	□	□	■
Rear privacy glass	□	□	□	□	■	■	■	■	■
ST-Line badge – Wing				■	■				
Vignale badge – Wing and rear									■
Detachable tow bar (includes 13-pin electrical kit)	□	□	□			□	□	□	

	Style	Zetec	B&O PLAY Zetec	ST-Line	ST-Line X	Titanium	B&O PLAY Titanium	Titanium X	Vignale
Exterior convenience features									
Door edge protectors		□	□	□	□	□	□	□	□
Headlights – Halogen reflector with black bezel and daytime running lights	■								
Headlights – Halogen projector with black bezel and dedicated LED daytime running lights		■	■	■	■	■	■	■	■
Auto Headlights – Automatic on/off	■	■	■	■	■	■	■	■	■
Headlights – Automatic on/off and highbeam (includes automatic wipers with rain sensor, headlight courtesy delay)					■	■	■	■	■
Rear lights – Non-LED	■	■	■	■		■	■	■	■
Rear lights – LED technology					■	■	■	■	■
Ford Easy-Fuel capless refuelling system	■	■	■	■	■	■	■	■	■
Tailgate wash/wipe	■	■	■	■	■	■	■	■	■
Wipers – Standard with 6-speed interval settings	■	■	■	■		■	■	■	■
Wipers – Automatic, with rain sensor					■	■	■	■	■
Quickclear heated windscreen		■	■	■	■	■	■	■	■

- Standard ■
- Optional, at extra cost □
- Part of an option pack at extra cost ▣

FORD FIESTA Interior features

	Style	Zetec	B&O PLAY Zetec	ST-Line	ST-Line X	Titanium	B&O PLAY Titanium	Titanium X	Vignale
Interior design features									
Door lever – Chrome finish	■	■	■	■	■	■	■	■	■
Front door threshold plates – Ford oval design		□	□			□	□	□	
Front door threshold plates – Unique ST-Line				■	■				
Front door threshold plates – Unique Vignale									■
Floor mats – Front and rear, velour						■	■	■	
Floor mats – Front and rear, ST-Line				■	■				
Floor mats – Front and rear, Vignale									■
Floor mats – Front and rear, contrast stitching			■				■		
Steering wheel – 3-spoke	■								
Steering wheel – 3-spoke, leather-trimmed		■	■			■	■	■	■
Steering wheel – ST-Line, 3-spoke, leather trimmed flat-bottomed				■	■				
Steering wheel – Heated, leather-trimmed (option within Comfort Pack)		□	□	□	□	□	□	■	■
Steering column – Rake- and reach-adjustable	■	■	■	■	■	■	■	■	■
Gearshift knob	■								
Gearshift knob – Leather-trimmed		■	■			■	■	■	
Gearshift knob – ST-Line, leather-trimmed with aluminium insert and metal grey gaiter stitching				■	■				
Gearshift knob – ST-Line, leather-trimmed with aluminium insert and red gaiter stitching					□				
Gearshift knob – Vignale, leather-trimmed									■
Sport pedal set – Stainless steel cappings and rubber inserts				■	■				
Headliner – Moulded, non-woven	■								
Headliner – Woven		■	■			■	■	■	■
Headliner – Woven (Dark)				■	■				
Climate control									
Air conditioning – Manual control	■	■	■	■					
Air conditioning – Electronic Automatic Temperature Control (EATC)					■	■	■	■	■

- Standard ■
- Optional, at extra cost □
- Part of an option pack at extra cost □



FORD FIESTA Interior features

	Style	Zetec	B&O PLAY Zetec	ST-Line	ST-Line X	Titanium	B&O PLAY Titanium	Titanium X	Vignale
Interior convenience features									
Ford Power Starter Button				■	■				
Ford MyKey®	■	■	■	■	■	■	■	■	■
Cruise control (includes Adjustable Speed Limiter)	▣	▣	▣	▣	■	■	■	■	■
Glove box – Illuminated	■	■	■	■	■	■	■	■	■
Centre console – with 12V power point and 2 cupholders	■	■	■						
Centre console – with armrest and openable stowage area with USB connectivity and 12V power point				■	■	■	■	■	■
Front overhead console with sunglasses holder		■	■	■	■	■	■	■	■
Courtesy light – Front and rear, overhead halogen	■								
Courtesy light – Front map light and rear, overhead LED		■	■	■	■	■	■	■	■
Courtesy light – Ambient LED courtesy lighting cup holder				■	■				
Courtesy light – Ambient LED courtesy lighting, footwell area, cup holder, inner door levers, door map pockets, front and rear map-reading lights						■	■	■	■
Rear-view mirror – Auto-dimming					■	■	■	■	■
Trip/fuel computer	■	■	■	■	■	■	■	■	■
Windows – Electrically-operated front with one-touch lowering/closing on driver's side	■	■	■	■	■	■	■	■	■
Windows – Electrically-operated front and rear with one-touch lowering/closing on driver's side, global closing (5-door)	▣	▣	▣	▣	▣	▣	▣	■	■
Seats									
Front seats – Comfort-style	■	■	■			■	■	■	■
Front seats – Sports-style				■	■				
Front seat – Driver's manual height and fore/aft adjustment	■	■	■	■	■	■	■	■	■
Front seat – Driver's manual lumbar support adjustment	▣	▣	▣	▣	■	■	■	■	■
Front seat – Passenger's manual height, lumbar and fore/aft adjustment					■	▣	▣	■	■
Front seats – Heated cushion and seatback (option within Comfort Pack)		▣	▣	▣	▣	▣	▣	■	■
Rear seat – 60:40 split back and cushion	■	■	■	■	■	■	■	■	■
Loadspace									
Warning triangle storage	■	■	■	■	■	■	■	■	■
Adjustable loadspace floor in luggage compartment (eliminates first aid kit strap and warning triangle storage)	▣	▣	▣	▣	▣	▣	▣	▣	▣

FORD FIESTA Option packs

	Style	Zetec	B&O PLAY Zetec	ST-Line	ST-Line X	Titanium	B&O PLAY Titanium	Titanium X	Vignale
Driver Assistance Technologies and Comfort & Convenience Features									
NCAP Technology Pack – Lane-Keeping Alert & Lane-Keeping Aid, Adjustable Speed Limiter, rear seatbelt minder, rear centre headrest and Auto-headlamps	■	■	■	■	■	■	■	■	■
Driver Assistance Features – Traffic Sign Recognition, Driver Alert, Auto Highbeam, 4.2" TFT coloured instrument cluster, Rain-sensing wipers and auto-dimming rear view mirror					■	■	■	■	■
Rear Parking Distance Sensors	▣				▣	▣	▣	▣	■
City Pack – Rear parking distance sensors and power-foldable door mirrors with puddle lights		▣	▣	▣					
Rear View Camera								■	
Rear View Camera Pack with Rear Parking Distance Sensors		▣	▣	▣	▣	▣	▣	▣	■
Advanced Auto Park Assistance Pack – Active Park Assist with front and rear parking sensors and rear view camera						▣	▣	▣	▣
Driver Assistance Pack – Pre-Collision Assist with Pedestrian Detection, Distance Indication and Distance Alert, Adaptive Cruise Control, and 4.2" TFT coloured instrument cluster screen	▣	▣	▣	▣	▣	▣	▣	▣	▣
BLIS (Blind Spot Information System) with Cross Traffic Alert – Blind Spot Information System and power-foldable door mirrors with BLIS indicator, Cross Traffic Alert and 4.2" TFT coloured instrument cluster		▣	▣	▣	▣	▣	▣	▣	▣
Comfort Pack – Heated front seats and heated steering wheel		▣	▣	▣	▣	▣	▣	■	■
Ford KeyFree System – Keyless Entry with Keyless Start					▣	▣		■	■

- Standard ■
- Optional, at extra cost ▣
- Part of an option pack at extra cost ▣

FORD FIESTA Option packs

	Style	Zetec	B&O PLAY Zetec	ST-Line	ST-Line X	Titanium	B&O PLAY Titanium	Titanium X	Vignale
Alloy Wheel Style Packs and Interior Personalisation									
16" Alloy Wheel Style Pack – Front door threshold plates, rear privacy glass and 16" 8-spoke Rock Metallic machined finish alloy wheels		<input type="checkbox"/>	<input type="checkbox"/>			<input type="checkbox"/>	<input type="checkbox"/>	<input type="checkbox"/>	
17" Alloy Wheel Style Pack – Front door threshold plates and 17" 8-spoke Sparkle Silver alloy wheels						<input type="checkbox"/>	<input type="checkbox"/>	<input type="checkbox"/>	
B&O PLAY Series – Bohai Bay Mint Edition – Bohai Bay Mint colour theme to key interior areas; Anodized interior door spears, air vent "Smiley" and instrument panel, foiled interior mirror cap and front & rear floor mats with Bohai Bay Mint contrast stitching			<input checked="" type="checkbox"/>				<input checked="" type="checkbox"/>		
B&O PLAY Series – Chrome Copper Edition – Chrome Copper colour theme to key interior areas; Anodized interior door spears, air vent "Smiley" and instrument panel, foiled interior mirror cap and front & rear floor mats with Chrome Copper contrast stitching			<input checked="" type="checkbox"/>				<input checked="" type="checkbox"/>		
ST-Line X Red Pack – Race Red colour theme to key interior areas; Anodized interior door spears, air vent "Smiley" and instrument panel, foiled interior carbon-style mirror cap and contrast red stitching to partial leather seats and door armrest					<input type="checkbox"/>				

FORD FIESTA Audio features

	Style	Zetec	B&O PLAY Zetec	ST-Line	ST-Line X	Titanium	B&O PLAY Titanium	Titanium X	Vignale
Audio & Navigation Systems									
Ford AM/FM Radio with 4.2" multi-functional coloured display, six speakers (four front and two rear), MP3-compatible, remote audio controls, Bluetooth®, MyFord Dock and USB connection for external music devices	<input checked="" type="checkbox"/>								
Ford DAB Radio with 4.2" TFT multi-functional coloured display, six speakers (four front and two rear), MP3-compatible, remote audio controls, Bluetooth®, MyFord Dock and USB connection for external music devices	<input type="checkbox"/>								
Ford SYNC 3 DAB Radio with 6.5" TFT touchscreen display, six speakers (four front and two rear), MP3-compatible, remote audio controls, Ford SYNC 3 with Voice Control System, Apple CarPlay, Android Auto, Emergency Assistance*, hands-free calling, GPS, Bluetooth®, Privacy Mode, and USB connection for external music devices		<input checked="" type="checkbox"/>		<input checked="" type="checkbox"/>					
Ford SYNC 3 Navigation System with DAB Radio, 8" TFT touchscreen display, seven speakers (four front, two rear, one centre), MP3-compatible, remote audio controls, Voice Control System, Apple CarPlay, Android Auto, Emergency Assistance*, hands-free calling, GPS, Bluetooth®, Privacy Mode, and USB connection for external music devices	<input type="checkbox"/>	<input type="checkbox"/>		<input type="checkbox"/>	<input checked="" type="checkbox"/>	<input checked="" type="checkbox"/>			
B&O PLAY Premium Audio & Navigation Systems									
B&O PLAY Premium Audio Sound System and Ford SYNC 3 Radio with DAB, 6.5" TFT touchscreen display, 10 speakers (four front, four rear, one centre) with subwoofer, MP3-compatible, remote audio controls, B&O Play, Ford SYNC 3 with Voice Control System, Apple CarPlay, Android Auto, Emergency Assistance*, hands-free calling, GPS, Bluetooth®, Privacy Mode, and USB connection for external music devices		<input type="checkbox"/>		<input type="checkbox"/>	<input type="checkbox"/>	<input type="checkbox"/>			
B&O PLAY Premium Audio Sound System and Ford SYNC 3 Navigation System with DAB Radio, 8" TFT touchscreen display, seven speakers (four front, two rear, one centre), MP3-compatible, remote audio controls, Ford SYNC 3 with Voice Control System, Apple CarPlay, Android Auto, Emergency Assistance*, hands-free calling, GPS, Bluetooth®, Privacy Mode, and USB connection for external music devices		<input type="checkbox"/>	<input checked="" type="checkbox"/>	<input type="checkbox"/>			<input checked="" type="checkbox"/>	<input checked="" type="checkbox"/>	<input checked="" type="checkbox"/>
CD Player									
CD Player mounted inside glovebox	<input type="checkbox"/>	<input type="checkbox"/>	<input type="checkbox"/>	<input type="checkbox"/>	<input type="checkbox"/>	<input type="checkbox"/>	<input type="checkbox"/>	<input type="checkbox"/>	<input type="checkbox"/>

Standard

Optional, at extra cost

Part of an option pack at extra cost

Standard

Optional, at extra cost

Part of an option pack, at extra cost.

*Ford Emergency Assistance is an innovative SYNC feature that uses a Bluetooth®-paired and connected mobile phone to help vehicle occupants initiate a direct call to the local Communications Centre, following a vehicle crash event involving an airbag deployment or fuel pump shut off. The feature operates in more than 40 European countries and regions.

FORD FIESTA Wheels

	Style	Zetec	B&O PLAY Zetec	ST-Line	ST-Line X	Titanium	B&O PLAY Titanium	Titanium X	Vignale
Wheels									
Wheel cover – Steel – 15"x6" (fitted with 195/60 R15 tyres*)	Standard								
Alloy – 15"x6", 8-spoke, Sparkle Silver (fitted with 195/60 R15 tyres*)		Standard	Standard						
Alloy – 16"x6.5", 10-spoke, Sparkle Silver (fitted with 195/55 R16 tyres*)						Standard	Standard		
Alloy –16"x6.5", 8-spoke Rock Metallic machined finish (available as part of a Style Pack) (fitted with 195/55 R16 tyres*)		Optional, at extra cost	Optional, at extra cost			Optional, at extra cost	Optional, at extra cost	Optional, at extra cost	
Alloy – 17x7", 8-spoke, Sparkle Silver (available as part of a Style Pack) (fitted with 205/45 R17 tyres*)						Optional, at extra cost	Optional, at extra cost	Optional, at extra cost	
Alloy – 17x7", ST-Line design Rock Metallic (fitted with 205/45 R17 tyres*)				Standard	Standard				
Alloy – 18x7", ST-Line design Rock Metallic/Machined (fitted with 205/40 R18tyres*)				Optional, at extra cost	Optional, at extra cost				
Alloy – 17x7", Vignale design Luster Nickel (fitted with 205/45 R17 tyres*)									Standard
Alloy – 18x7", 8-spoke, Vignale Polished alloy (fitted with 205/40 R18tyres*)									Optional, at extra cost
Tyre repair kit	Standard	Standard	Standard	Standard	Standard	Standard	Standard	Standard	Standard
Spare wheel – Steel – 14"x5.5" (Not available with B&O PLAY Audio System or panorama roof)	Optional, at extra cost	Optional, at extra cost		Optional, at extra cost	Optional, at extra cost	Optional, at extra cost			

Standard

Optional, at extra cost

Part of an option pack at extra cost

*The wheel you choose will be fitted with the tyre size noted, but no choice of tyre brand is available.
Note: The 18" wheels and tyres available on Ford Fiesta are designed to deliver more sporting driving characteristics and a firmer ride quality compared to standard 15 and 16" wheels. All 17" and 18" wheels require steering rack limiter (plant and Dealer fit).

FORD FIESTA Mechanical features

	Style	Zetec	B&O PLAY Zetec	ST-Line	ST-Line X	Titanium	B&O PLAY Titanium	Titanium X	Vignale
Steering									
Electric power-assisted steering (EPAS)	Standard	Standard	Standard	Standard	Standard	Standard	Standard	Standard	Standard
Suspension									
Front – Independent with MacPherson struts and anti-roll bar, rear – Independent Control Blade multi-link system and anti-roll bar	Standard	Standard	Standard			Standard	Standard	Standard	Standard
Suspension – Sports				Standard	Standard				
Technology									
Auto-Start-Stop system (standard on all engines)	Standard	Standard	Standard	Standard	Standard	Standard	Standard	Standard	Standard

Standard

Optional, at extra cost



FORD FIESTA Safety and security

	Style	Zetec	B&O PLAY Zetec	ST-Line	ST-Line X	Titanium	B&O PLAY Titanium	Titanium X	Vignale
Safety									
Intelligent Protection System (IPS) ¹⁾	■	■	■	■	■	■	■	■	■
Anti-lock Braking System (ABS) ¹⁾ with Electronic Brake-Force Distribution (EBD) ¹⁾	■	■	■	■	■	■	■	■	■
Enhanced Electronic Stability Control (ESC) ¹⁾ with Traction Control ¹⁾ , Emergency Brake Assist (EBA) ¹⁾ , Hill Start Assist (HSA) ²⁾ and Trailer Sway Control ¹⁾	■	■	■	■	■	■	■	■	■
Emergency Brake Warning ²⁾ – Automatic flashing of brake lights under heavy braking	■	■	■	■	■	■	■	■	■
Airbags – Driver and front passenger's* ¹⁾ (single stage)	■	■	■	■	■	■	■	■	■
Airbags – Front side impact ¹⁾	■	■	■	■	■	■	■	■	■
Airbags – Front and rear side curtain ¹⁾	■	■	■	■	■	■	■	■	■
Tyre Pressure Monitoring ¹⁾	■	■	■	■	■	■	■	■	■
Seats – ISOFIX mounting provision for child seat ¹⁾	■	■	■	■	■	■	■	■	■
Security									
Remote central/double locking	■	■	■	■	■	■	■	■	■
Thatcham Category 1 Alarm		■	■	■	■	■	■	■	■



Standard ■

Optional, at extra cost □

Part of an option pack at extra cost ▣

¹⁾Safety feature, ²⁾Driver assistance feature.

***Note: A child seat should never be placed in the front passenger seat when the Ford vehicle is equipped with an operational front passenger's airbag. The safest place for children is properly restrained on the rear seat.**

FORD FIESTA Dimensions and capacity

3-door

1093L

Laden to roof.

292L

Laden to package tray.

5-door

1093L

Laden to roof.

292L

Laden to package tray.

	Fiesta 3 door	5 door	Fiesta ST-Line 3 door	5 door
Overall length without/with towbar (mm)	4040/4140	4040/4140	4065/-	4065/-
Overall width with/without mirrors (mm)	1941/1735	1941/1735	1941/1735	1941/1735
Overall width with folded-back mirrors (mm)	1783	1783	1783	1783
Overall height (mm) (unladen)	1476	1476	1466	1466
Minimum distance between wheel arches (mm) (in luggage compartment)	980	980	980	980
Turning circle – kerb to kerb (m)	10.05	10.05	10.05	10.05
Interior dimenisons				
1st seat row headroom (mm) (without panorama roof)	992	992	992	992
1st seat row legroom (mm) (maximum with seat in rearmost midheight position)	1125	1125	1125	1125
1st seat row shoulder room (mm)	1346	1346	1346	1346
2nd seat row headroom (mm) (without panorama roof)	955	955	955	955
2nd seat row legroom (mm) (maximum with seat in rearmost midheight position)	835	835	835	835
2nd seat row shoulder room (mm)	1300	1300	1300	1300
Luggage capacity (litres)*				
5-seat mode (laden to package tray) (with tyre repair kit)	292	292	292	292
2-seat mode (laden to roof) (with tyre repair kit)	1093	1093	1093	1093
Loadspace				
Max. loading height (mm)	824	824	824	824
Loading width between wheel houses (mm)	980	980	980	980
Loading length (at floor to second row seats) (mm)	721	721	721	721
Fuel tank capacity (litres)				
Petrol	42	42	42	42
Diesel	42	42	42	42

*Measured in accordance with ISO 3832. Dimensions may vary dependent on the model and equipment fitted.

Fiesta ST-Line 3-door & 5-door

Height: 1466 mm†



Width: 1735 mm†
Width (with mirrors): 1941 mm†



Length: 4065 mm†

Fiesta 3-door & 5-door

Height: 1476 mm†



Width: 1735 mm†
Width (with mirrors): 1941 mm†



Length: 4040 mm†



Making ownership easy and affordable.

Take advantage of a range of invaluable services and make the most of your car – for as long as you own it.

FORD SERVICE

Delivering total peace of mind.

With Ford, the service doesn't end when you leave the showroom. Ford Service is designed to keep your Ford in great condition and help you make the most of your car – throughout its life.

- **Free Electronic Vehicle Check***
- **Free European Roadside Assistance***
- **Transparent prices**
- **Mobility Service to help keep you moving**
- **A One Call number to connect you to all Ford services: 0203 564 4444**

*The 30-point FORD eCHECK is a visual only vehicle inspection. Your participating Ford Dealer may recommend that certain essential work be carried out on the grounds of safety before you drive your vehicle.
*Roadside Assistance can be extended for a further 12 months when your vehicle has a Scheduled service at a Ford Dealer. Available at participating Dealers only, see ford.co.uk for more information.

FORD PROTECT

Extend your warranty up to 5 years / 100,000 miles with Ford Protect.

Extend your standard 3-year / 60,000 miles warranty and enjoy worry-free motoring for many years to come. Ford Protect provides a range of key benefits including:

- **High flexibility in duration and mileage**
- **Cover against unexpected electrical and mechanical repair costs in the UK and Europe**
- **Inflation proof: all increases in warranty repair costs are covered**
- **Help prolong the lifespan of your Ford vehicle**
- **Protects your vehicle resale value**

To increase potential resale value, Ford Protect New Vehicle Warranties are transferable to the new owner should you decide to sell your vehicle.

FORD Protect Extended Warranty for New Vehicles

	Annual Mileage (mls)
4 Year Protection	80,000 mls
5 Year Protection	100,000 mls

FORD FIESTA Next steps



try
Visit your Ford Dealer and test drive the All-New Ford Fiesta for yourself. Find your local dealer:
<http://www.ford.co.uk/SBE/RequestATestDrive/TestDriveCar>



build
Build and price your All-New Ford Fiesta to your specification and see how it looks at:
<http://www.ford.co.uk/ConfigureYourCar/New-Fiesta>.



finance

When it comes to financing your car, our size and expertise means we're well placed to provide you with a wide range of finance products.

Ford Credit* provides a range of finance products for your car whether you are a private or business user.

Ford Lease^ specialises in contract hire and leasing and provides an alternative range of finance plans which can be tailored to suit your business. Business users only.

For more information about our finance products visit:
<http://www.ford.co.uk/BuyingandprotectingyourFord/FinancefromFordCredit>



contact

Ford Credit Customer Services 0345 712 5490
Ford Lease Customer Services 0344 600 1405

*Finance subject to status. Guarantees/indemnities may be required. Freepost Ford Credit. Ford Credit is a trading style of FCE Bank plc., which is authorised by the Prudential Regulation Authority and regulated by the Financial Conduct Authority and the Prudential Regulation Authority under firm reference number 204469.

^Ford Lease is provided by ALD Automotive Limited, trading as Ford Lease, Oakwood Drive, Emersons Green, Bristol, BS16 7LB. ALD Automotive is registered in England No. 987418. For the purposes of the Data Protection Act 1998 the data controllers in relation to any information you supply are Ford Motor Company Limited, FCE Bank plc and ALD Automotive. Finance subject to status. Guarantees and indemnities may be required. ALD Automotive is authorised and regulated by the Financial Conduct Authority in respect of general insurance products.



eBrochure containing full features and specifications
You can also download your brochure to further help you make a detailed choice at:
<http://www.ford.co.uk/Hidden/BrochuresandPricelists>



own

When you drive away in your new car, we're with you all the way. Ford has a large authorised service network to help you keep your car in the best condition.

All-New Fiesta has a flexible 2 year / 18,000 m service interval on all Stage 6 engines.

And should your new Ford ever require accident repair, a Ford Accident Repair Centre is the best place to get your car back to its pre-accident condition and on the road as quickly as possible.



FordPass

A Smarter Way to Move. Learn more at:
<https://www.fordpass.co.uk/>

FORD FIESTA Warranty

Ford Warranty	All Fiesta models
	3-year/ 60,000 miles* Warranty
	1-year/unlimited miles* Ford Assistance Roadside Cover (Europe)
	1-year/unlimited miles* Paint Warranty
	12-year/unlimited miles* Perforation Warranty
	Standard

*Whichever occurs soonest; from date of first registration.
Year 1 - unlimited mileage. Subject to terms and conditions.

FORD FIESTA Insurance Groups

	Style	Zetec	B&O PLAY Zetec	ST-Line	ST-Line X	Titanium	B&O PLAY Titanium	Titanium X	Vignale
1.1 Ti-VCT (70 PS (51.4kW)) (5-speed manual)	2E								
1.1 Ti-VCT (85 PS (62.5kW)) (5-speed manual)		5E	5E						
1.0 Ford EcoBoost (100 PS (74kW)) (6-speed manual)		10E	10E	10E	10E	10E	10E	10E	
1.0 Ford EcoBoost (100 PS (74kW)) (6-speed automatic)		10E	10E	10E	10E	10E	10E	10E	10E
1.0 Ford EcoBoost (125 PS (91kW)) (6-speed manual)				12E	13E	12E	12E	13E	13E
1.0 Ford EcoBoost (140 PS (103kW)) (6-speed manual)				15E	15E			13E	15E
1.5 Duratorq TDCi (85 PS (62.5kW)) (6-speed manual)	8E	8E	9E						
1.5 Duratorq TDCi (120 PS (88kW)) (6-speed manual)				14E	15E	14E	14E	15E	15E

E = Exceeds security requirement for model concerned and group rating has been reduced. Insurance ratings are issued by the Association of British Insurers and are shown above on the 1-50 rating scale.

Illustrations, descriptions and specifications. This catalogue was correct at the time of going to print. However, Ford policy is one of continuous product development. The right is reserved to change specifications, colours and prices of the models and items illustrated and described in this publication at any time. For the latest details always consult your Ford Dealer. **Optional equipment.** Throughout this publication, wherever a feature is described as being an 'Option' or 'Option Fitment/Pack' etc, you should assume that it will be at extra cost to the base vehicle, unless specifically stated to the contrary. All models and colour combinations are subject to availability. **Note.** Some images portrayed are of a pre-production model and/or are computer generated, therefore, the design/features on the final version of the vehicle may differ in various respects. In addition, some of the features shown on the vehicles may be optional. **Note.** This brochure contains both original Ford accessories as well as a range of products from our suppliers. **+**The identified accessories are carefully selected third party supplier branded accessories which do not come with a Ford warranty but are covered by the third party supplier's own warranty, the details of which can be obtained from your Ford Dealer. **Note.** The Bluetooth® word mark and logos are owned by the Bluetooth SIG, Inc. and any use of such marks by Ford Motor Company is under licence. The iPod word mark and logos are the property of Apple Inc. Other trademarks and trade names are those of their respective owners. **Note.** Some driver assistance features and safety features described in this brochure are designed to function using sensors, whose performance may be affected under certain weather or environmental conditions.

The Government fuel figures do not express or imply any guarantee of the fuel consumption of any particular vehicle. The vehicles themselves have not been tested and there are inevitably differences between individual vehicles of the same model. In addition, a vehicle may incorporate particular modifications. Furthermore, the driver's style and road and traffic conditions, as well as the extent to which the vehicle has been driven and the standard of maintenance, will affect its fuel consumption. **Insurance groups** are only as recommended by the Association of British Insurers. You should always consult your insurance adviser for confirmation.



Ford One Call

In the unlikely event that your Ford Dealer can't help you or if you need to speak to us directly, call 0203 564 4444

Ford Rental - local service nationwide

Car and Van rental from our latest model range.
Contact your local Ford Dealer for more information

Ford Motability

Call our Ford Motability team on 0345 6040019

Finance

Ford Credit Customer Services 0345 712 5490
Ford Lease Customer Services 0344 600 1405
Calls to 0344 and 0345 numbers are charged at the same rate as a standard 01 or 02 geographic number, even when calling from a mobile.

Published by Ford Motor Company Limited,
Brentwood, Essex, England.
Registered in England No. 235446.

FA 1540/16
BJN 205355. FoE H38E.
PN 771503/0517/100m/GBR en

May 2017.
© Ford Motor Company Limited.

MY 2017.5 GBR en

